



Gunpower

SERIOUS AIRGUNS FOR THE SERIOUS SHOOTER

about gunpower

In this catalogue you will find some of the most advanced and accurate air gun products available on the market today.



We have a unique, versatile shooting system providing many amazing features such as adjustable velocity and interchangeable calibers. Our air guns are used by people ranging from target shooters to government bodies.

Our goal was to offer an entire shooting system that allows for modifications and upgrades as the shooter's interests or needs change.

When you purchase one of our models, don't think of this as one rifle, think of it as a changeable platform to meet a variety of shooting needs.

Our rifles offer advanced design, performance, and versatility for every shooter. With our precision German made barrels and recoilless design producing high levels of accuracy, shooters trying a GunPower air gun soon discover the major advantages of our PCP system.

hellcat

For the serious hunter wanting a compact, yet powerful, hunting tool.



The HellCat sets a new standard in pre-charged air pistol power levels. The Direct-Flo™ Valve delivers over 50 ft.lbs of energy with a standard lead hunting pellet. This pistol is for the serious hunter wanting a compact, yet powerful, hunting tool.

HellCat is available in Original Black. We also offer shooting kits and your choice of either Quick-Detach or Spin-Loc™ air tanks to meet your specific shooting application.

ramothunter



Hellcat specifications

Velocity	400-900 feet per second
Power adjustment	Factory fixed or user adjustable (where permitted)
Max fill pressure	3000psi / 200 bar
Action	Single shot
Weight	3.5lbs (1.59Kg)
Length	24 inches (61cm)
Barrel	12 Inches (30cm) Lothar Walther premium match
Caliber	.177 (4.5mm), .20 (5.0mm), .22 (5.5mm), .25 (6.35mm)
Trigger	2 stage adjustment for position and over-travel
Sights	Open sights or scopes may be fitted
Air tank volume	213cc
Safety	Automatic on cocking can be reset by pushing cocking knob completely forward

CODES: .177 Black GP6017 • .20 Black GP6020 • .22 Black GP6022 • .25 Black GP6025 • Red - R • Blue - B



stealth

Primarily built as a superb take-down hunting rifle, the Stealth is also an accurate target gun.



GunPower



The aircraft grade aluminium and space age polymer combination, together with state of the art production techniques give a high performance air rifle like no other. Using compressed air as its power source the Stealth can give over 500 shots per fill at 12ft/lbs in .22 using a EU certified cylinder that can be inexpensively filled from a standard scuba tank or from a high pressure stirrup pump.

The Stealth comes with the unique versatile GunPower "multi-mount" system featuring three dovetail mounting rails for accessories.

The firing system is ergonomically designed with an automatic safety and easily accessible safety release, two stage trigger, an over-sized cocking knob, a large pellet loading port and a burst disc to prevent over filling on the tank.

Stealth specifications

Velocity	400-850 feet per second
Power adjustment	Factory fixed or user adjustable (where permitted)
Max fill pressure	3000psi / 200 bar
Action	Single shot
Weight	5.25lbs (2.38Kg)
Length	29 inches (74cm)
Barrel	12 Inches (30cm) Lothar Walther premium match
Caliber	.177 (4.5mm), .20 (5.0mm), .22 (5.5mm) & .25 (6.35mm)
Trigger	2 stage adjustment for position and over-travel
Sights	Open sights or scopes may be fitted
Air tank volume	490cc
Safety	Automatic on cocking can be reset by pushing cocking knob completely forward

shadow

The GunPower Shadow is a unique adult air weapon with an integral moderator for efficient hunting.



The Shadow has all the features of the popular Stealth model, but has the extra advantage of being integrally suppressed. Where silencers are not allowed or where extra sound suppression is required the Shadow is the perfect choice. Featuring a Lothar Walther 12" (30cm) match grade

barrel the Shadow has an extra long frame allowing for the expansion of air from the barrel after the pellet has exited, thereby reducing the noise and eliminating 'muzzle crack'.

Where allowed the Stealth silencer can be fitted to the Shadow to make this rifle one of the quietest available.

Shadow specifications

Velocity	400-850 feet per second
Power adjustment	Factory fixed or user adjustable (where permitted)
Max fill pressure	3000psi / 200 bar
Action	Single shot
Weight	5.4lbs (2.5Kg)
Length	33 inches (84cm)
Barrel	12 Inches (30cm) Lothar Walther premium match
Caliber	.177 (4.5mm), .20 (5.0mm), .22 (5.5mm) & .25 (6.35mm)
Trigger	2 stage adjustment for position and over-travel
Sights	Open sights or scopes may be fitted
Air tank volume	490cc
Safety	Automatic on cocking can be reset by pushing cocking knob completely forward





storm

The GunPower Storm is an adult air weapon designed today for the shooters of tomorrow.



GunPower



The Storm rifle again has all the features of the Stealth but with an 18" (45cm) Lothar Walther match grade barrel which can give either more shots per fill at low velocity or an improved top velocity achieving up to 950 feet per second (330m/s) depending

on pellet weight, calibre and power setting. Because the barrel extends beyond the frame of the rifle a different moderator is used (where permitted), designed from light-weight Carbon Fibre and fully baffled for maximum effect.

Storm specifications

Velocity	400-950 feet per second
Power adjustment	Factory fixed or user adjustable (where permitted)
Max fill pressure	3000psi / 200 bar
Action	Single shot
Weight	5.5lbs (2.5Kg)
Length	33 inches (84cm)
Barrel	18 Inches (45cm) Lothar Walther premium match
Caliber	.177 (4.5mm), .20 (5.0mm), .22 (5.5mm) & .25 (6.35mm)
Trigger	2 stage adjustment for position and over-travel
Sights	Open sights or scopes may be fitted
Air tank volume	490cc
Safety	Automatic on cocking can be reset by pushing cocking knob completely forward

SSS

Probably one of the most powerful small calibre air rifles in the world. The SSS is capable of producing 60ft/lbs of muzzle energy in a choice of calibers.

PLEASE NOTE: Because of the power of the rifle, in the UK it is only available on a Firearms Certificate.

SSS

The space age design of this rifle follows the same pattern as the other three in the GunPower Hunting Range, but with a longer frame and a strengthened top rail to provide a sleek and aesthetically pleasing look.

It is fitted with a Lothar Walther Match grade 24inch (60cm) high grade steel barrel with the rifling to suit such a high power rifle.

All GunPower SSS rifles come with a power adjuster built into the frame, allowing the user to adjust the power shot-to-shot. This means the power can be wound right down to around 14ft/lbs or right up to the maximum 60ft/lbs. This allows the rifle to be used in a variety of different settings and for multi-purposes.

SSS specifications

Velocity	Over 1200 feet per second
Power adjustment	User adjustable with thumb wheel
Max fill pressure	3000psi / 200 bar
Action	Single shot
Weight	6.61lbs (3kg)
Length	39 inches (99cm)
Barrel	24 inches (60cm) Lothar Walther premium match
Caliber	.177 (4.5mm), .20 (5.0mm), .22 (5.5mm) & .25 (6.35mm)
Trigger	2 stage - adjustment for position and over travel
Sights	Open sights or scopes may be fitted
Air tank volume	490cc
Safety	Automatic on cocking can be reset by pushing cocking knob completely forward



GunPower

edge



Edge Flexi-Weights are designed for maximum flexibility. Weights can be mounted anywhere on the frame or muzzle extension allowing dramatic adjustability of overall weight and balance point while still falling within target shooting weight limits.



Above, simple O-rings are used to secure the weights which allow quick and easy weight configurations for different users.

The new 10 metre entry level target rifle from GunPower. Available in red, blue or black, this high quality precision rifle has all the features of a target rifle costing three times the price.

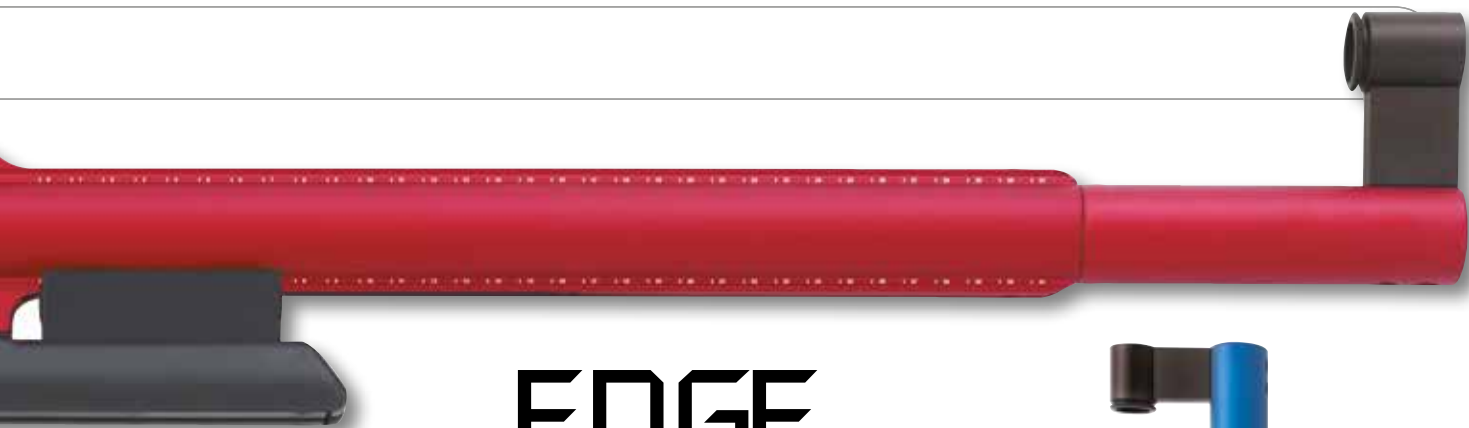
It has a fully adjustable forend for position along the underside of the rifle on the 11mm dovetail. A fully adjustable butt plate allowing the length of pull to be altered from 12 to 17 inches (30 to 43 cm) and a cheek-piece that is adjustable for height.

The weight of the rifle is only 6.1 lbs (2.77Kg) making it light enough for youngsters to be able to handle and with the adjustability of the rifle making it an ideal starter rifle for beginners entering the world of Olympic 10 metre target or bell target shooting.

Edge specifications

Velocity	500-530 feet per second
Power adjustment	Factory fixed
Max fill pressure	3000psi / 200 bar
Action	Single shot
Weight	6.1lbs (2.5Kg)
Length	35-40 inches
Barrel	12 Inches (30cm)
Caliber	0.177 (4.5mm)
Trigger	2 stage adjustable
Sights	GunPower TS1 Peep Sight System
Shots per fill	100
Safety	Manual

GunPower

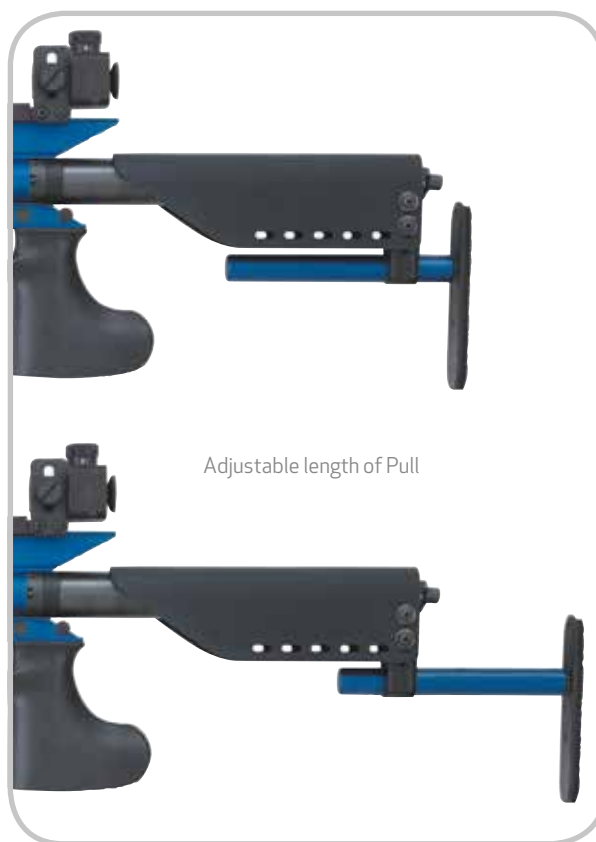


EDGE

Working off 3,000 p.s.i. or 206 Bar compressed air, the rifle is totally recoilless and with the match grade Lothar Walther precision German barrel this is truly an awesome target rifle.

The trigger has a two stage adjustable set up, and as an added extra it has a dry firing position on the cocking bolt for testing the trigger release and avoiding over-pull when firing.

The rifle can be supplied with our own sighting system, a diopter rear sight with full height adjustment and also solid, elevation and windage adjustment. The front peep sight also comes with three different elements.



Adjustable length of Pull



Position marks on all mounting rails

Producing 6 foot pounds of muzzle energy or 7.5 joules the EDGE will give 100 fully regulated shots at almost equal velocity.

CODES: Gun Only .177 Black GP7017 • Red GP7017R • Blue GP7017B
Gun plus Sights .177 Black GP7117 • Red GP7117R • Blue GP7117B





XS

The seriously quiet choice for small game, pests and long distant shooting.



XS

The new XS combines the major attributes of the Shadow's quiet operation and the SSS's high power levels. New sound reduction technology and the 18 inch barrel

work together to offer most of the standard SSS hunting and pest control capabilities at a dramatically reduced noise level.

gunpower

XS specifications

Velocity	600-1300 feet per second
Power adjustment	Factory fixed or user adjustable (where permitted)
Max fill pressure	3000psi / 200 bar
Action	Single shot
Weight	6.1lbs (2.8Kg)
Length	38 inches
Barrel	18 inches (46cm)
Caliber	.177 (4.5mm), .20 (5.0mm), .22 (5.5mm) & .25 (6.35mm)
Trigger	2 stage adjustable
Sights	Open or optical may be installed
Air tank volume	490cc
Safety	Automatic on cocking can be reset by pushing cocking knob completely forward

t e x a n

The world's most
powerful production
air rifle.

TEXAN

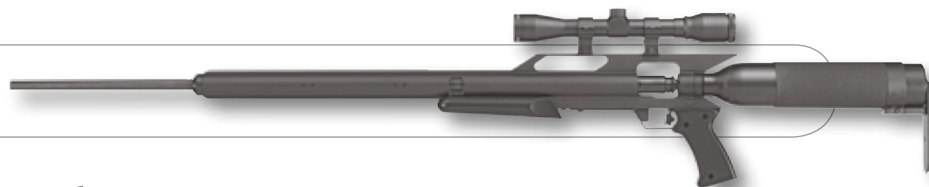
With the ability to launch .45 caliber projectiles over 1000 feet per second and generating energy levels of over 500 foot pounds, the Texan™ takes its place as the world's most powerful production air rifle.

Easy to load and simple to use, this big bore air rifle will let you focus on hunting with the knowledge you have enough power to get the job done.

Texan specifications

Velocity	300-1000 feet per second
Power adjustment	Factory fixed
Max fill pressure	3000psi / 200 bar
Action	Single shot
Weight	7.65lbs (3.5Kg)
Length	48 inches
Barrel	34 inches (30cm)
Caliber	0.45 (11.43mm)
Trigger	2 stage adjustable
Sights	Open or optical may be installed
Air tank volume	490cc
Safety	Automatic on cocking can be reset by pushing cocking knob completely forward

CODES: .45 Black GP8045



ramo-hunter

tanks

1 HellCat™ Quick-Detach Spare Tank

Use quick detach tanks when a more compact portable package is needed.
Standard GP9061 • Hi-Flo GP9062

2 HellCat™ Spin-Loc® Spare Tank

Equipped with pressure gauge and quick fill connection. Spin-Loc system required.
Standard GP9064 • Hi-Flo GP9065

3 Edge Spare Tank Only

Edge spare tanks provide complete backup for the big match or extended shooting session.
GP9004

4 Quick-Detach Spare Tank

Standard spare tanks allow the rifles to shoot at moderate velocities with very low air usage.
Standard GP9001 • F.A.C. Tank GP9002 • Hi-Flo GP9003

5 Spin-Loc® Spare Tank

Equipped with pressure gauge and quick fill connection. Spin-Loc system required.
Standard GP9006 • F.A.C. Tank GP9008 • Hi-Flo GP9007

6 Spin-Loc® Texan Spare Tank

Equipped with pressure gauge and quick fill connection. Fits Texan only.
GP9009



rampower

charging



◀ Hand Pump GP9024

The High Pressure Hand Pump is an alternative to filling from a scuba tank.



◀ Refill Adaptor GP9010

Refill Adaptor is available for customers who already have a charging assembly. The male thread size is 1/4 BSP.

Refill Adaptor GP9011

As 9010 but with 1/8 BSP male thread.



◀ Brass Adaptor GP9015

Converter from 1/4 BSP to 1/8 BSP.



CO₂ Adaptor GP9019 ▶

CO₂ Adaptor adds the ability to use standard CO₂ paintball tanks in place of the full power 3000 psi air tank. Ideal for backyard plinking or indoor target shooting.



◀ Quick Fill Adaptor for Edge and Spin-Loc GP9020



▲ A Clamp Fill System with quick disconnect GP9023



▲ DIN Fill System with quick disconnect GP9022



▲ 1/8 BSP GP9021 (fits existing GP9013 & GP9014)



▲ Swingline® Fill System A Clamp GP9028 • DIN GP9029

Allows the user to orientate the valve clamp, pressure gauge and fill line independently. It allows the scuba cylinder to be positioned vertically or horizontally and still enables easy access to the fill line or to view the pressure gauge. After filling the fill line can be rotated close to the scuba cylinder for storage or transport



▲ Sound-Loc® Baffle System .177 Only GP9054 • .20, .22 & .25 GP9055

Advanced airgun noise reduction system kit for Shadow and XS rifles.



◀ DIN Fill System GP9013

Permits charging of the Stealth/Storm series air tank from a din valve scuba cylinder.

‘A’ Clamp Assembly GP9014 ▶

As 9013 but for pillar valve scuba tanks or K Valve.



ramo power

optics & mounts



▲ TS1 Adaptive Airgun Sight GP9032

TS1 is a universal diopter target sight designed for the EDGE 10 meter 3-Position sporter class target rifle. The sight is adaptable to most airguns with its standard 11mm dovetail-mounting base.

Sighting adjustment is performed with large $\frac{1}{8}$ minute click adjustment knobs that may be reset to zero.

Sight can be removed from mounting base and clamped into any 1" scope ring. The sight aperture uses the standard European metric thread so adjustable apertures may also be used.



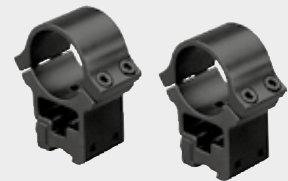
▲ Universal Front Sight GP9033

Front Sight with a huge range of vertical adjustment. Mounts to most airgun dovetail grooves. Features a floating aiming point preferred by Olympic shooters.



▲ 4-16x50 Scope GP9030

High definition fully coated optical glass lenses are used for maximum light transmission. Target knobs with crisp quarter-minute clicks, an adjustable objective, illuminated mil-dot reticles in red, blue and green and heavy construction for use on PCP and spring guns.



▲ High 1" Rings GP9034

Rings with an advanced dual position clamping system, threaded recoil stop and 4 screw wraparound ring caps are for use with GunPower and most other PCP and spring air guns.



▲ Fibre Optic Open Sights GP9031

Quick detachable fibre optic open sights allow the shooter to quickly switch from open sights to other sighting systems including optical, red dot, laser or night vision.



▲ Dovetail to Picatinny/Weaver Adaptor GP9037

Dovetail mount accepts Picatinny/Weaver style rings and accessories. Use alone or in sets depending on mounting requirements.



▲ Tri-Rail Scope Base GP9036

The Tri-Rail mount offers dovetail-mounting surfaces on three sides and raises the sight line so standard scope rings may be used.



▲ LS-1 Laser Sight GP9035

This premium laser is waterproof and shockproof. Adjustment and locking screws allow the user to adjust beam alignment.

accessories

Lothar Walther Barrels

All barrels are fully interchangeable with our rifles except the Edge.



▲ 12" Lothar Walther Barrel .22 GP9072 • .177 GP9070 • .20 GP9073 • .25 GP9071



▲ 18" Lothar Walther Barrel .22 GP9077 • .177 GP9075 • .20 GP9076 • .25 GP9078



▲ 24" Lothar Walther Barrel .22 GP9082 • .177 GP9080 • .20 GP9081 • .25 GP9083



◀ Single Edge Weight GP9048



◀ Edge Weight Set GP9049

Set of five weights shown on Edge barrel.



▲ Stealth Silencer GP9050



▲ Stealth Modular Silencer GP9051



▲ Carbon fibre silencer for Storm/SSS GP9052



▲ Bipod GP9040

The tilt Bipod provides a stable rest when shooting with optical sights and is quickly attached with a large coin-slotted screw.



▲ Thumbhole / Accessory Bar GP9041

The Thumbhole/Accessory Bar provides additional support for the buttplate and provides additional accessory mounting points.



▲ Sling Swivel Stud Set GP9042

The Sling Swivel Stud Set allows shooters to quickly mount a sling to the top or bottom of the rifle.



▲ Laptop Bag GP9044

For Stealth only.



▲ Sling GP9043

Black webbed sling with quick detachable Q.D. Sling Swivels and 9042 Stud Set.

ramothpower



GunPower • PO Box 567 • Ashford • Kent TN23 5FP • UK
t: +44(0)1233 642357 • f: +44 (0)1233 613899 • e: sales@gunpower.net

www.gunpower.net